

Kubus®

A new generation of windows

# Less is more

**ATTENTION ARCHITECTS!**



Let more sunshine  
into your home

Bringing stylistic perfection into your bright  
haven of safety, security and love

[en.mik-ce.si](http://en.mik-ce.si)

CONTACT US AT  
**+386 3 425 50 50**



# Less is more

“It seems that perfection is attained, not when there is nothing more to add, but when there is nothing more to take away.”

Antoine de Saint-Exupéry

## Aesthetics and perfection

An ever-increasing energy efficiency is expected in the construction and renovation of buildings. At the same time, **contemporary design** must provide for a **harmonised** and **consistent appearance** of the whole building.

Additionally, factors like security, noise protection, durability, etc. must be considered when buying windows. More often than not, the main purpose of windows is overlooked: they must let **THE LIGHT** in.

## Did you remember to put quality of life first?

Have you ever stopped to consider if your new windows provided **ENOUGH SUNLIGHT**? Doubtless you have heard people say: “**Oh, what a lovely BRIGHT APARTMENT you have!**” It often happens that our mood changes when we walk into a room; e.g. we can suddenly cheer up, start smiling more and generally feel more positive.

Natural light has a much more profound effect on our mood and behaviour than we realise. It has been proven that more light in an apartment raises the quality of life.



So make sure that your home is a bright haven of safety, security and love.

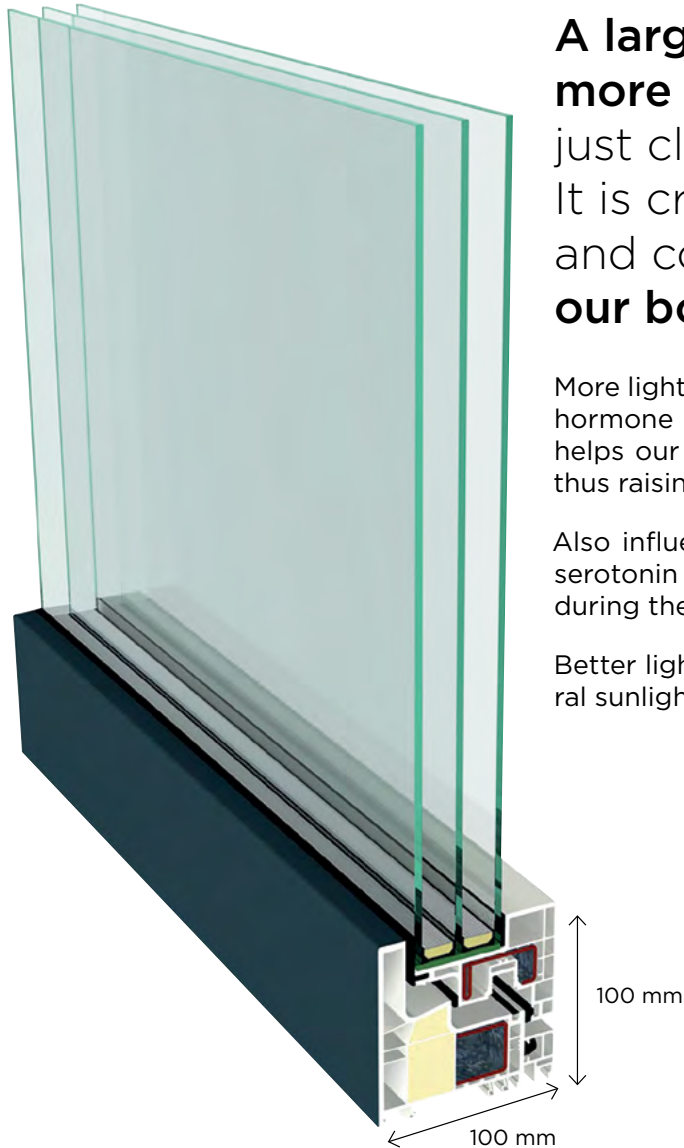
## KUBUS® System's main advantages

- The increased glazed surface allows more than 10% more light in.
- Sash is not visible yet it can be opened.
- No glazing bars.
- Simple form - a square profile: 100 x 100 mm.
- Excellent design.
- Superb thermal insulation.
- A unique product on the market.



# Clean design

The KUBUS® System features **reduced sash and frame dimensions; 100 x 100 mm**. There are **no interrupted lines** on the window frame surface and the **rectangular shape** enhances the harmony of the living space.



**A larger glazed surface and over 10% more light.** Light means much more than just clear visibility within the living space. It is crucial for our **health** and **well-being**, and consequently a **better functioning of our bodies** throughout the day.

More light in a room **increases our cortisol levels** (a stress-response hormone that influences our wakefulness) and warm white light helps our **body relax** and **stimulates it for work** at the same time, thus raising our efficiency.

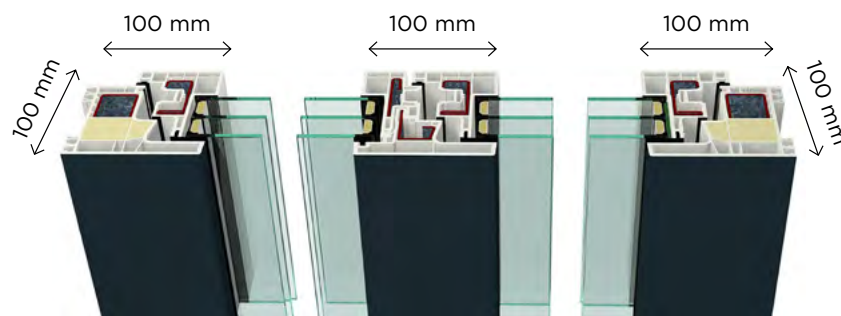
Also influenced by light is the hormone melatonin, a derivative of serotonin which is often called the **“happiness hormone”**. More light during the day makes us **happier**.

Better lighting increases our **productivity by about 23%** while natural sunlight can increase it by as **much as 80%**.



## A square-framed, invisible sash

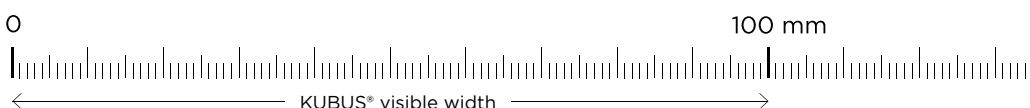
The Kubus system is distinguished by the **reduced dimensions of its sash** frame which is **invisible** from the outside. The front and the side of the frame have the same visible width, which adds to the aesthetics and symmetry.



## A smooth, superior design

The KUBUS® System is like **nothing ever seen** before on the window market. An abundance of extra light and increased glazed surface optically enlarges the space. The simple yet perfect lines add to the new window system's appeal. There are **no interrupted lines** on the window frame surface and the rectangular shape enhances the harmony of the living premises. Make sure your future is bright: choose KUBUS®!

**Less is more**



A classic system with a visible sash

# Superb design and elegance

A **rectangular look inside and out**. The sash, which can be opened, is **invisible** from the outside. The Kubus System offers a unique window frame geometry - 100 x 100 mm and free of glazing bars - which allows in **more sunlight** and **simplifies cleaning**.



**A rectangular look** inside and out. **1**  
The sash is **invisible** from the outside. **2**



**Glazing-bar-free** sash **3** and a flush appearance of the frame, and the sash from the inside with an optional casing. **4**



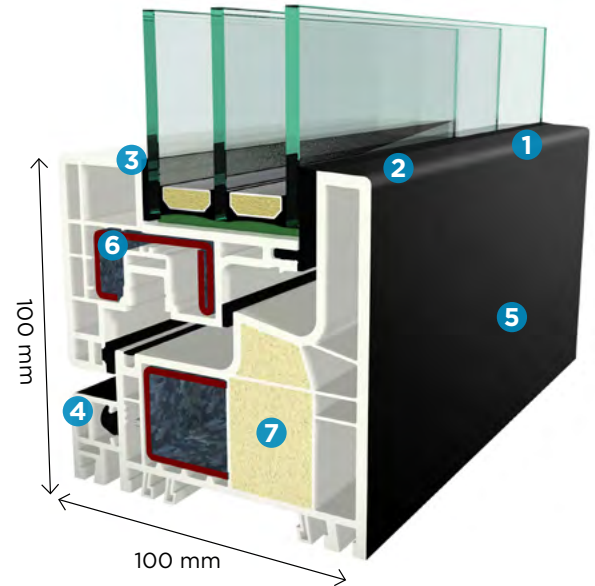
**Acrylic colours** that give the external profile a unique finish have an excellent **resistance towards abrasions and dirt** and provide for **simple cleaning**. **5**



An **innovative technology of dry gluing the glass** pane to the whole window frame offers a **better static strength** that renders any additional metal reinforcements of the sash obsolete, thus **enhancing the thermal insulation properties of the window**. **6**



The frame chambers are **filled with active polyurethane foam** that is an **excellent thermal insulation** and improves the thermal insulation properties of the whole window frame. **7**



$U_w = 0.73 \text{ W/m}^2\text{K}$   
Maximum frame dimensions  
**1200 x 2500 mm**

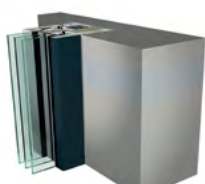


**100 mm**  
THE FULL DIMENSION OF EVERYTHING

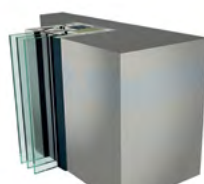
- Without glazing bars
- Sash depth and width together with frame and mullion: 100 x 100 mm
- Compact appearance from indoors
- Clear lines



100% visible window frame



Semi-visible window frame



Invisible window frame

## The perfect window form

What more could you ask for? **The design of a new generation** of KUBUS® window systems where the sash is not visible, opening up a totally new perspective and new building design options. You can choose between a 100% visible frame, a semi-visible frame or a completely invisible frame. Each option makes a special impression.

## A simplified frame geometry for easier cleaning

The KUBUS® System is set apart by its undulated interior frame geometry that provides for **simple cleaning**. The glued contact insulation and the intermediate contact insulation are elegantly integrated into the sash and are no longer a part of the frame.

